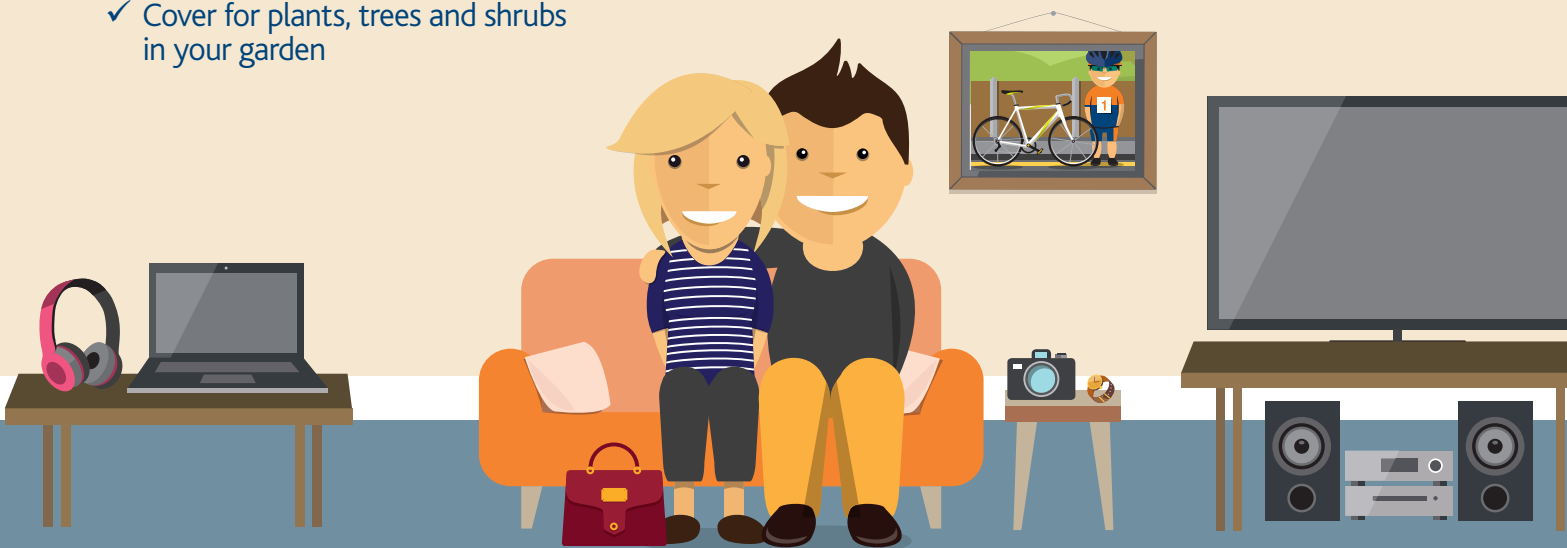


Contents insurance

Incorporating Tenancy Liability

If you're moving into a new rented property soon you may want to consider insuring your contents and your liability as a tenant.

- ✓ £50,000 blanket of cover for your own contents
 - ✓ £10,000 of Tenancy Liability cover
 - ✓ Transferable between properties, even if you become a homeowner
 - ✓ Cover increase during special occasions
 - ✓ £1,000 cover for students' contents when they're in term time accommodation
 - ✓ Cover for plants, trees and shrubs in your garden
 - ✓ Cover for the contents of sheds, garages and outbuildings
 - ✓ Cover for damage to interior decorations that you've paid for
 - ✓ Up to £500 cover for pedal cycles within the boundaries of your home
- Plus a whole host of additional extras that enable you to tailor the policy to your own needs...



To get cover visit homelet.co.uk/tenants
0800 035 8258